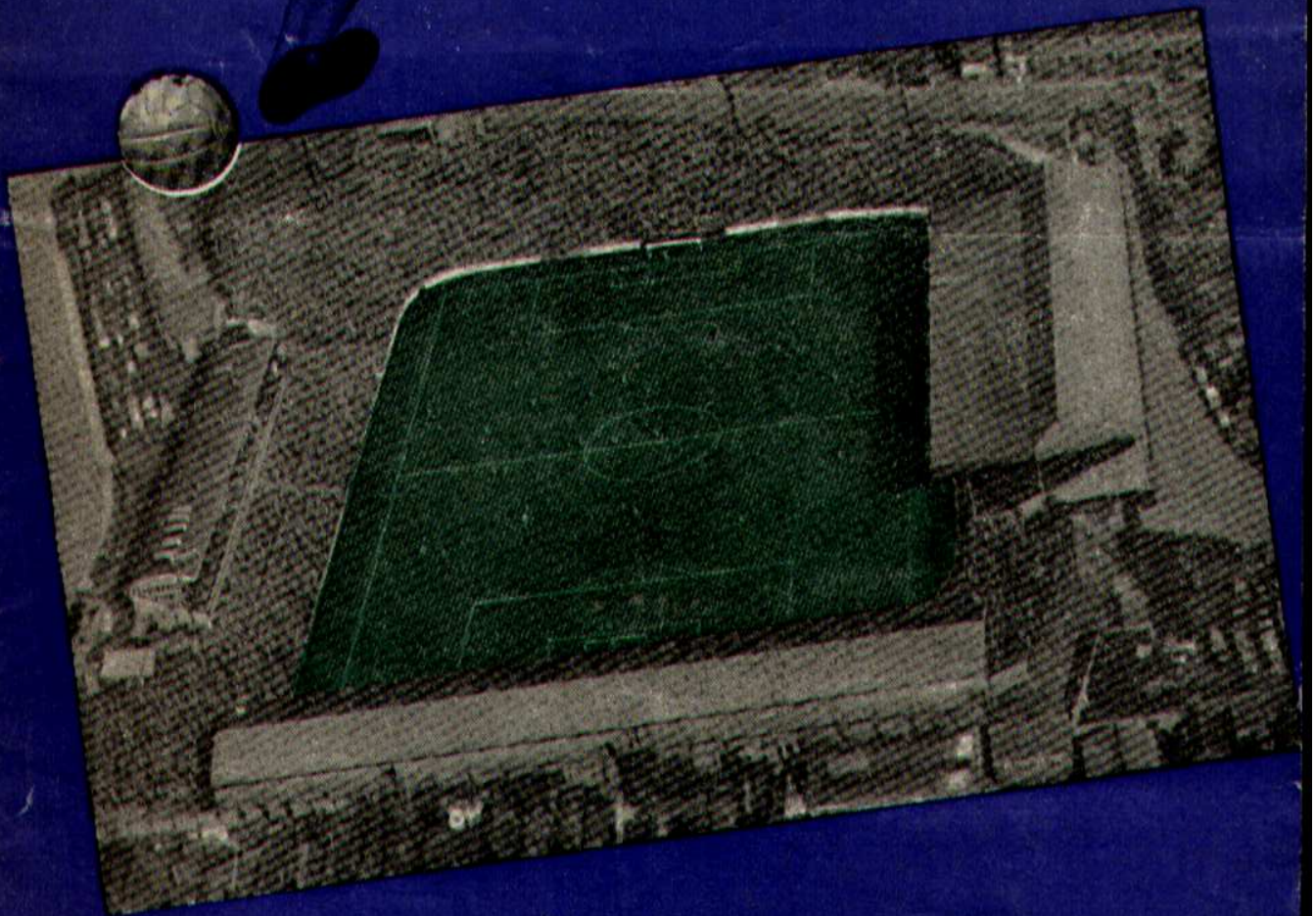


# CITY



OFFICIAL PROGRAMME

4<sup>D</sup>

The ADVANTAGES of SHOPPING the



**hogarth**

happy families WAY

**NO EXTRA CHARGE**

YOU have a voucher for any amount from £1 upwards repayable over TWENTY WEEKS.

- EXAMPLES {
- £5 voucher — 5/- per week for only 20 weeks
  - £10 voucher — 10/- per week for only 20 weeks
  - £15 voucher — 15/- per week for only 20 weeks

AS YOU SEE, NOTHING IS ADDED FOR TWENTY WEEKS CREDIT

**NO WAITING**

ON the FIRST PAYMENT of only 1/- in the Pound, you choose your goods in any of our Department Stores, have them wrapped, and away you go.

Our delivery service copes with anything you can't carry.

**CASH PRICES**

NOT ONE PENNY IS ADDED to the price of any article for the convenience of 20 weeks FREE CREDIT.

The nationally advertised prices of our extensive range of branded goods will prove the truth of this statement.

**hogarth**

Department Stores at

CORPORATION STREET & WALSGRAVE ROAD, COVENTRY  
and at NORTH STREET, RUGBY

**DON'T DELAY**

Post this coupon today (2d. stamp, unsealed envelope) for a copy of our leaflet containing full particulars of how to SHOP THE HOGARTH "happy families" way.

To: HOGARTH STORES LIMITED, Dept. F.C.1.  
P.O. Box No. 11, FOLESHILL ROAD, COVENTRY.

Please send me a copy of your leaflet containing full particulars of how to shop the HOGARTH "happy families" way.

NAME .....

ADDRESS .....

.....

Founded 1883

## COVENTRY CITY FOOTBALL CLUB LIMITED

President Col. The Lord Kenilworth, C.B.E. T.D.

Vice-Presidents: W. Young, F. Stringer

Directors: W. W. Brandish (Chairman) Derrick H. Robins (Vice-Chairman), R. B. Cole, J. R. Mead, J.P.,  
Dr. P. Coghill

Manager W. Frith

Joint Medical Officers: Drs. P. Coghill and J. L. Ballantyne

Secretary: B. W. Hitchiner

Members of Football League, Third Division, and Football Combination  
Registered Office and Ground: HIGHFIELD ROAD, COVENTRY.  
Telephone: Coventry 3461. Telegrams: "City Football, Coventry."



## Bantam topics . . . .

THE best football sides in the World have to expect the odd set-back, and although our first set back of the season came earlier than was expected in the home defeat by Halifax, we hope our Supporters will not let this slip dishearten them. It has certainly not disheartened the players as can be gathered from the two excellent displays they gave last week-end at York and Halifax. We started off with two very good gates, and in spite of the odd goal defeat on the Monday, we feel sure our Supporters enjoyed the football—sheer football which our players now insist on playing, no matter what the score, as our manager is confident this is the sort of football which in the end will get results.

The Club's balance sheet which has recently been issued shows a nett loss for the year ending May 31st last of £10,137,

and it is interesting to note that, had it not been for transfer fees and other non-repeatable items, a working profit would have been made. For this we have to thank you, our Supporters, for the wonderful support you gave us last season. We feel sure everyone will agree that the money spent on transfer fees was spent wisely and our playing strength at the start of this season is infinitely stronger than it was this time last year, and surely this has been proved, not only by our promotion at the end of last season, but also by the displays so far given by the League side this season. We hope that the Halifax defeat will not cause any of our Supporters to stay away this week-end, as, we are determined to build our strength sufficiently to carry us to even further honours, and for this we must have your whole hearted support. . . . .

NOW— AS NEVER BEFORE

# DAVIES'S

*for the finest sports kit!*

46 SMITHFORD WAY and 58 GOSFORD ST., COVENTRY

(Outfitters to Coventry City F.C. Ltd.)



# FOSTRIAN Supaslaks

Cut and tailored by Foster craftsmen from fine Yorkshire woolsens.  
Supaslaks give you style and quality at the lowest possible price.  
They're your best buy to-day.

★ 1 STAR

Pure worsted—  
various shades

55/-

★★ 2 STAR

Worsted or gaber-  
dine, half or all  
round belt.

65/-

★★★ 3 STAR

Worsted or gaber-  
dine. Self-support-  
ing waist.

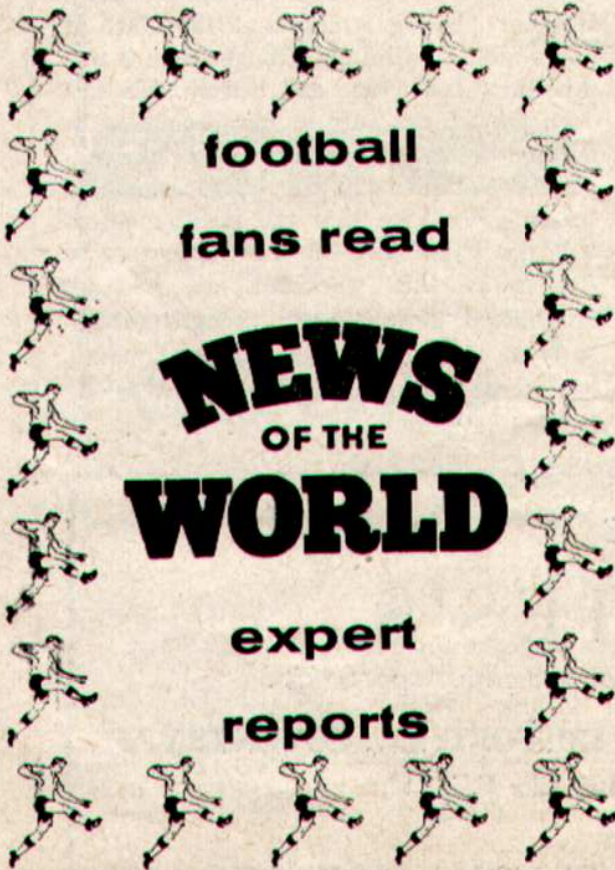
75/-

One of the many outstanding values in clothing obtainable only at

## Foster Brothers

MEN'S, YOUTHS' AND BOYS' OUTFITTERS SINCE 1876

10 BROADGATE, COVENTRY.  
398 FOLESHILL ROAD, GREAT HEATH.  
1 KING WILLIAM STREET, HILLFIELDS.



football  
fans read

**NEWS  
OF THE  
WORLD**

expert  
reports

**CHESTERFIELD  
versus  
COVENTRY CITY**

**CHEAP TRIP**  
Saturday, 12th September  
to  
**CHESTERFIELD**

From	Depart a.m.	Return Fares s. d.
Leamington Spa Avenue	10.40	11/3
Leamington Spa Milverton	10.45	11/3
Kenilworth	10.55	10/9
Coventry	11.05	10/3
Coundon Road	11.10	10/3
Foleshill	11.20	9/9
Bedworth	11.30	9/3
Chilvers Coton	11.35	8/9
Nuneaton Trent Valley	11.45	8/9
CHESTERFIELD Midland arrive 1.35 p.m.		
<i>Light Refreshments available</i>		
Return Same Day at 5.50 p.m.		
Further information from Stations and Official Railway Agents		

LONDON MIDLAND

## Spotlight on . . .

From the

Manager . . . .

SINCE losing at home to Halifax Town, by the only goal scored, the boys have thoroughly earned and deserved two points from visits to York and Halifax. Those who saw these two games will agree that both should have been won, and indeed, but for the single lapse in each case by one of our defenders, would have been. Both mistakes were brought about by these defenders' desire to be constructive, and many would say that the ball in each case could easily have been kicked into touch. This is true of course, but I think it preferable to keep the game moving, and I think that the odd occasion when this gets us into trouble, is more than out-weighed by the many occasions on which we gain advantage from it.

Our football so far has been good, and had we scored the goals which it deserved, we should have had four comfortable wins. If we continue to play like this, and, as we hope, improve, the goals must come. Whilst we can help ourselves by more incisive shooting, and a more ready desire to have a "crack", this is not the whole answer. The run of the ball—and this is important too—has been against us as it so often was last year, and I feel that the wheel must soon turn in our favour.

### FROM THE SICK BAY

LOL HARVEY—Received a further injury to the knee which he hurt in training, to see a London specialist on Monday.  
BRIAN HILL—is moving about quite freely and has resumed light training.  
PETER HILL.—Operation for removal of cartilage successfully performed and Peter has returned home from hospital.  
FRANK KLETZENBAUER—has had the plaster removed and is expected to resume training in a fortnight's time.



ARTHUR JEPSON  
(Chief Scout)

Today's personality should be of more than usual interest to our Supporters, as Mr. Jepson is the man one hears little about. Since his appointment as the Club's chief talent spotter, he has travelled the country on scores of journeys. His is a job which is never finished, as, no matter how successful a Club is, they can never afford to relax their efforts to recruit new "blood", and Coventry City is no exception. His experience as a player is standing him in good stead, and it is interesting to recall that he has played for Grantham Town, Port Vale, Stoke City, Lincoln City, Northwich Victoria and Gloucester City. He was also Player-Manager at Hinckley Athletic, Manager at Long Eaton, and has done some scouting for Burnley. He joined our staff in September 1957, and we consider ourselves fortunate to possess such a good judge of a player.

Dan, Dan the Rhyming man says :—

We never thought that higher status  
Would end a Customer hiatus  
Of how, or why, or when, we win or lose  
But reason says that this year's tussles  
Will strain our nerves, our thoughts, our muscles  
So let's avoid those early season "Blues".

# SHANKS

BUILT - TO - LAST

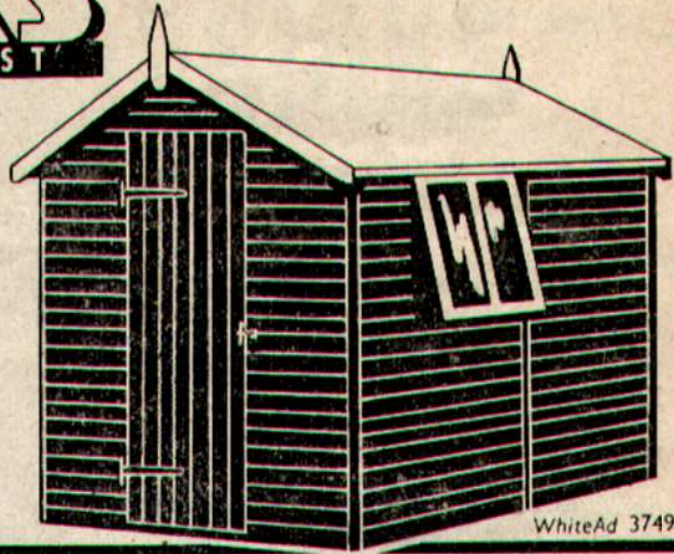
## OF COVENTRY

TOOL SHEDS, CYCLE SHEDS  
GREENHOUSES, POULTRY  
HOUSES, GARAGES, etc.  
First-class workmanship through-  
out. Full range on show at Lock-  
hurst Lane. Free delivery from  
stock in Midland Area. Security  
Insurance on all easy payments.

*Free Catalogue on Application*

**E. O. SHANKS & SONS LTD**

Coventry's own makers of High-  
Class Woodwork since 1905  
Lockhurst Lane, Coventry  
Tel. 89301 (5 lines)

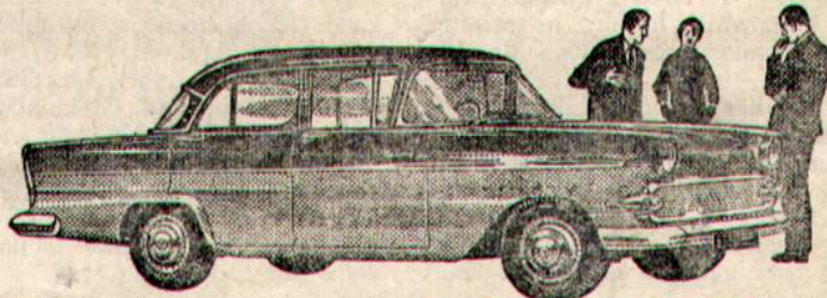


WhiteAd 3749

### HALF-TIME SCORES

<b>A</b> BARNSELY SOUTHEND	<b>G</b> SHREWSBURY NORWICH	<b>M</b> BLACKPOOL NOTTS. F.
<b>B</b> BRAD. CITY CHESTERF'D	<b>H</b> SOUTHAMPT'N COLCHESTER	<b>N</b> MAN. CITY WOLVES
<b>C</b> BURY MANSFIELD	<b>I</b> TRANMERE PORT VALE	<b>O</b> W.B.A. LEICESTER
<b>D</b> GRIMSBY ACCRINGTON	<b>J</b> WREXHA M BOURNEM'TH	<b>P</b> WEST HAM LEEDS
<b>E</b> Q.P.R. NEWPORT	<b>K</b> YORK CITY HALIFAX	<b>Q</b> BRISTOL R. ASTON VILLA
<b>F</b> READING BRENTFORD	<b>L</b> BIRMINGHAM MAN. UTD.	<b>R</b> SWINDON Res. COVENTRY Res.

THE 1960 MOTOR SHOW MODEL VAUXHALLS  
ARE IN OUR SHOWROOM NOW



VICTOR £717    VICTOR SUPER £752  
VICTOR DE LUXE £802

*on show at*

**W. Brandish & Sons Ltd., Vauxhall Main Dealers**  
WHITEFRIARS STREET, COVENTRY.    Telephone 25361

# TODAY'S MATCH

Teams for to-day's match Saturday, September 5th, 1959

Kick-off 3 p.m.

## COVENTRY CITY

(White Shirts with Blue Neck and Arm Bands and White Knickers)

<i>Right</i>		<b>Lightening</b>		<i>Left</i>
		Goalkeeper		
	2 <b>Kirk</b>		3— <b>Austin</b>	
	Right Back		Left Back	
	4— <b>Nicholas</b>	5 <b>Curtis</b>	6 <b>Farmer</b>	
	Right Half-back	Centre Half	Left Half-back	
7 — <b>Daley</b>	8 <b>Straw</b>	9— <b>Stewart</b>	10 <b>Ryan</b>	11— <b>Boxley</b>
Right Wing	Inside Right	Centre Forward	Inside Left	Left Wing

Referee :

**Mr. N. N. Hough**  
(Macclesfield)



Linesmen :

**Mr. S. A. Leeding**  
(Yellow Flag)

**Mr. N. A. S. Matthews**  
(Red Flag)

11— <b>Darcy</b>	10— <b>Gauld</b>	9 <b>Layne</b>	8— <b>Richards</b>	7— <b>Stephens</b>
Left Wing	Inside Left	Centre Forward	Inside Right	Right Wing
	6— <b>Tilley</b>	5— <b>Mellor</b>	4 — <b>Morgan</b>	
	Left Half-back	Centre Half	Right Half-back	
	3— <b>Bingley</b>	2— <b>Thompson</b>		
	Left Back	Right Back		
<i>Left</i>		<b>Burton</b>		<i>Right</i>
		Goalkeeper		

## SWINDON TOWN

(Red Shirts and White Knickers)

Alterations to the above teams and announcements will be given through the Loud Speakers.

No 3626

THIS IS THE NUMBER  
THAT COULD TAKE YOU  
TO THE CUP FINAL AT  
WEMBLEY

LISTEN FOR THE  
WINNING NUMBER TO  
BE ANNOUNCED AT  
HALF-TIME

### FORTHCOMING MATCHES

MONDAY, SEPTEMBER 7th, 1959

#### BRADFORD CITY

Football League Kick-off 7.15 p.m.

SATURDAY, SEPTEMBER 12th, 1959

#### FULHAM

Football Combination Kick-off 3 p.m.

THURSDAY, SEPTEMBER 24th, 1959

#### BANIK OSTRAVA

(Czechoslovakia) Kick-off 7.15 p.m.

**A SAFE BET ALWAYS**

*for*  
**VALUE . . .**  
**QUALITY . . .**  
**AND DIVIDEND**

*at the*

**COVENTRY AND DISTRICT  
CO-OPERATIVE SOCIETY LTD.**  
Corporation Street - Coventry  
(Tel. 40331 10 lines)

**THE COVENTRY THEATRE  
AND RESTAURANT**

7th SEPTEMBER Evng. 7-30 Mat. Sat. 2-30

**SADLER'S WELLS OPERA**

Details of Repertoire from Box Office

14th SEPTEMBER Mon. to Fri. at 7-30  
Mat. Thurs. 2-30 Sat. 5 and 8

*A New Exotic Production of The World's  
Longest Running Musical*

**CHU CHIN CHOW**

*Starring the Incomparable . . .*

**INIA TE WIATA**

*and a Brilliant Cast of 50*

Box Office (Phone 3141) Open 10 a.m. to 8 p.m.

**Marston's Burton Ales**

**LIGHT, BROWN and PEDIGREE PALE  
ON SALE IN ALL THE BARS**

*Open One Hour before Kick-Off*

*Branches : 30, KING WILLIAM STREET, COVENTRY. Telephone 3546  
30a, QUEEN'S ROAD, NUNEATON. Telephone 3181*

**D. Di Mascio & Co. Ltd.**

Wholesale and Retail Ice Cream Manufacturers  
**420, STONEY STANTON ROAD, COVENTRY**  
Telephone 88145

**ICE CREAM FOR ALL OCCASIONS**

**Edward R. Cooke**

*IRONMONGER*

**94/95, FAR GOSFORD STREET**

NEAR GOSFORD GREEN Phone 61841

Nos. 1, 4, 6, 7 and 11 Buses pass  
the door. No. 9 Buses pass close by

Heating Stoves, Oil Convectors  
MONOVECTOR, VALOR, ALADDIN  
We can now arrange deferred  
payments for you.

*Why not call and see us.*

**COAL - COKE - ANTHRACITE  
WASHED BREEZE**

**SHEPPARDS**

**COAL & METALS LTD.**

**2, LEWIS ROAD, COVENTRY**

Phone 60049 (2 lines)

**HAULAGE CONTRACTORS**

*Cash Buyers of Iron and Steel  
and Metals of Every Description*

**ENQUIRE OUR PRICES**



# WELCOME TO OUR VISITORS

Today's visitors SWINDON TOWN, to whom we offer a hearty welcome, are a team who have come into the limelight during the past two seasons with something like startling suddenness. Their new period of success dates back to the appointment of Mr. Bert Head to the Manager's chair. They disappointed somewhat last season after finishing in the fourth position in season 1957-58. Despite their lower position last season however, they brought off some surprisingly good wins, and must be regarded with the utmost respect this afternoon. During the close season they have signed a full back, half-back and two forwards, indicating their determination to improve their position this season. We are sure this encounter will prove an interesting one.



## PEN PICTURES

- SAM BURTON** (Goalkeeper) Product of local football joining Swindon in 1945. Played for Wilts. Junior eleven which reached final of counties Tournament 1944-45. Height 6ft. Weight 13st. 7lbs.
- JOHN HIGGINS** (R.B.) Signed from Hibernian during the 'close season'. Born in Kilmarnock. Height 5ft. 10ins. Weight 11st. Previously he was with the Scottish club St. Mirren.
- WALTER BINGLEY** (L.B.) Born in Sheffield. Signed in the early part of the 1958 season, making his League debut then for the 'Robins'. Walter came from Sheffield Wednesday, with Bolton previously. Height 6ft. Weight 12st.
- KEITH MORGAN** (R.H.) Another teenager produced through the ranks of the 'Robins' youth teams. A county youth player, he made his debut last season playing a dozen League games. Height 6ft. 1in. Weight 12st. 7lbs
- KEN MELLOR** (C.H.) Joined the 'Robins' during the 'close season' from Mansfield Town converted into a centre half when he joined Mansfield from Leicester. Height 5ft. 11ins. Weight 11st. 7lbs.
- REX TILLEY** (L.H.) Second season with Swindon after a period of six years with Plymouth Argyle. Born in Swindon. Height 5ft. 11ins. Weight 11st.
- JOHN STEPHENS** (O.R.) Second season with the 'Robins' after joining them from Hull City. At the age of 22 he has already been capped for Wales under 23 side. Height 5ft. 8ins. Weight 10st. 7lbs.
- JOHN RICHARDS** (I.R.) Signed from the Army during 1957-58 season. A goal-scoring inside forward. A versatile forward, playing in all inside forward positions and right wing, last season's top goalscorer. Height 5ft. 11ins. Weight 12st. 7lbs.
- DAVID LAYNE** (C.F.) Signed from Rotherham United during the 'close season', made a dozen appearances for the Second Division Club. David was born in Sheffield. Height 5ft. 11ins. Weight 12st. 7lbs.
- JIMMY GAULD** (I.L.) Recent signing from Plymouth Argyle.
- ARNOLD DARCY** (O.L.) Born at Blackburn, joining the 'Robins' from Wigan during 1956-57 season. Played as an Amateur for Accrington Stanley in 1952-53 season. Height 5ft. 8ins. Weight 10st. 6lbs.



## BIRMINGHAM LEAGUE

"A" Team away to Worcester City. Lost 0-5. We do not feel justified in judging our young side on this match, as the Worcester side contained no less than five players normally in their first team. The opposition was much too experienced for our youngsters. Team: West, Ashcroft, Mason P., Sadler, Walker, Jarvis, Cornbill, Harvey F., Mason J., Allen, Hunter.

"A" Team away to Boldmere St. Michaels. Drew 1-1. A good performance, as they fought back well after being a goal behind at 20 minutes. Played good football all through. Scorer, Jarvis. Team: West, Ashcroft, McCarthy, Sadler, Golder M. L., Jarvis, Hunter, Sansome, Haley, Golder M., Marchie.



**R. H. M. S.**  
**COVENTRY**  
**RED HOUSE MOTOR SERVICES**

**Chesterfield v. Coventry City**

**Saturday, 12th September**

Leave Pool Meadow at 10.30 a.m.

Fare 11/6d.

Full Particulars—

HEAD OFFICE, CROMWELL STREET  
 'Phone 89004 or

R.H.M.S. OFFICE, POOL MEADOW  
 'Phone 89006

**FIXTURES**

**FOOTBALL LEAGUE DIVISION III.**

Aug.				
22	Mansfield	H	2 0	19,769
24	Halifax Town	H	0 1	19,980
29	York City	A	1 1	9,354
31	Halifax Town	A	2 2	8,868
Sept.				
5	Swindon Town	H		
7	Bradford City	H		
12	Chesterfield	A		
15	Bradford City	A		
19	Newport County	H		
21	Q.P.R.	H		
26	Accrington Stanley	A		
28	Q.P.R.	A		
Oct.				
3	Bournemouth & B.A.	H		
5	Tranmere Rovers	H		
10	Bury	A		
12	Tranmere Rovers	A		
17	Barnsley	H		
24	Southampton	A		
31	Southend U.	H		
Nov.				
7	Shrewsbury Town	A		
14	(1) F.A. Cup			
21	Norwich City	A		
28	Brentford	H		
Dec.				
5	(2) F.A. Cup			
12	Reading	A		
19	Mansfield Town	A		
26	Wrexham	A		
28	Wrexham	H		
Jan.				
2	York City	H		
9	(3) Port Vale	H		
16	Swindon Town	A		
23	Chesterfield	H		
30	(4) Colchester U.	A		
Feb.				
6	Newport County	A		
13	Accrington Stanley	H		
20	(5) Bournemouth	A		
27	Bury	H		
Mar.				
5	Barnsley	A		

**FOOTBALL COMBINATION FIXTURES**

Aug.				
29	Colchester	H	2 5	
Sept.				
1	Brentford	A	0 1	
5	Swindon Town	A		
12	Fulham	H		
17	Northampton Town	A		
19				
26	Aldershot	H		
28	Northampton Town	H		
Oct.				
3	Gillingham	A		
10	Shrewsbury Town	H		
17	Mansfield Town	A		
24	Crystal Palace	H		
31	Norwich City	A		
Nov.				
7	Plymouth Argyle	H		
14	Notts County	A		

**LEAGUE—DIVISION III.**

	P	W	D	L	F	A	P
Grimsby	4	3	1	0	13	4	7
Shrewsbury	4	2	2	0	10	2	6
Bury	4	3	0	0	9	2	6
Norwich	4	2	2	0	9	4	6
Halifax	4	2	2	0	6	5	6
Q.P.R.	4	2	1	1	8	3	5
Bournemouth	4	2	1	1	5	2	5
Bradford City	4	2	1	1	9	6	5
Swindon	4	2	1	1	9	7	5
Brentford	4	2	1	1	9	7	5
Newport	4	2	1	1	4	3	5
<b>COVENTRY CITY</b>	<b>4</b>	<b>1</b>	<b>2</b>	<b>1</b>	<b>5</b>	<b>4</b>	<b>4</b>
Southampton	4	1	2	1	10	10	4
Wrexham	4	1	2	1	6	7	4
Port Vale	4	2	0	2	6	6	4
Tranmere	4	1	1	2	6	6	3
Southend	4	1	1	2	4	8	3
York	4	1	1	2	2	5	3
Colchester	4	0	2	2	6	11	2
Barnsley	4	0	2	2	4	8	2
Chesterfield	4	1	0	3	10	15	2
Accrington	4	0	2	2	5	14	2
Mansfield	4	0	2	2	2	7	2
Reading	4	0	0	4	6	11	0

# Use your Head!...

... and begin to save NOW ...

By opening an account with the 'Economic' any sum from one shilling may be saved, and withdrawals made as desired up to the total amount invested.

Interest at  $3\frac{1}{2}\%$  (tax paid) a year, if you pay tax at standard rate your money earns £6. 1. 9 per cent.

THERE IS NO FINER SAVINGS SERVICE

**COVENTRY PERMANENT ECONOMIC  
BUILDING SOCIETY**

HIGH STREET, COVENTRY . Branch Office: 5 EARLSDON ST., COVENTRY



Contractors to the Admiralty and Air Ministry

Telephone: Coventry 60086-7-8-9

## GARLICKS LTD.

Established 1862

Building Contractors

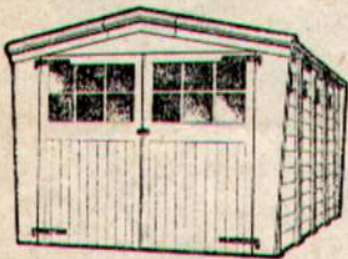
SPECIALISTS IN ALL INDUSTRIAL BUILDINGS

42 FAR GOSFORD STREET, COVENTRY

# BANBURY

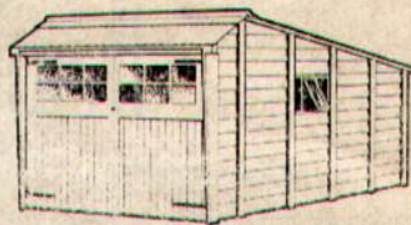
Make the finest  
CONCRETE GARAGES

50 MODELS ★ CASH PRICES FROM £46.15.0 OR EASY TERMS



BICESTER

Banbury Garages lead the way in design and workmanship, PLUS the easiest self-assembly of all—that is really the secret of Banbury's outstanding success. Remember — Buy Banbury — you'll be as proud of it as we are. Come and see the Banbury Buildings at our delightful Show Gardens in the lovely Cotswold countryside. All models on display. Open daily including Saturdays and Sundays till 5.30.



BRACKLEY



BASIC

POPULAR

BUCKINGHAM

BURFORD

BROADWAY

## BATTERY GARAGES



THE BEDFORD



THE BERWICK

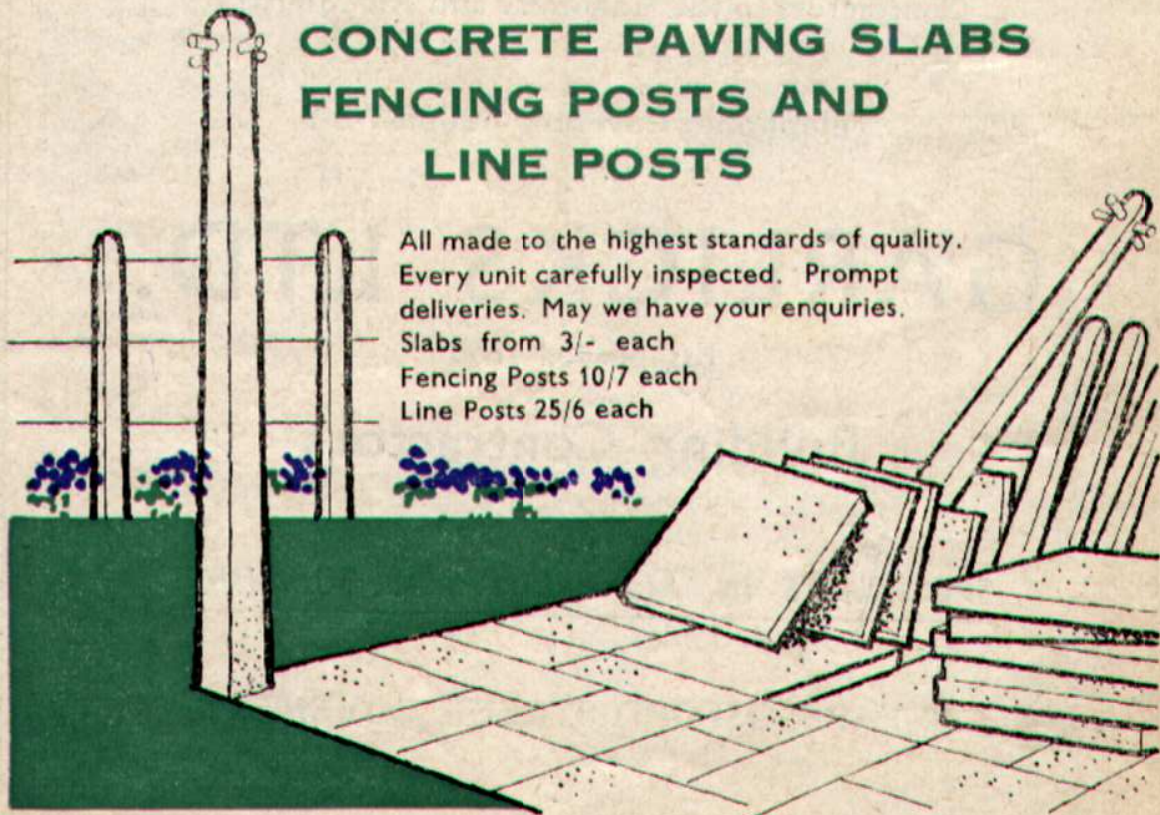


THE BRACKLEY

## PORTABLE CONCRETE BUILDINGS LTD.

IRONSTONE WORKS, AYNHO RD., ADDERBURY, BANBURY. Tel.: Adderbury 331/2/3

## CONCRETE PAVING SLABS FENCING POSTS AND LINE POSTS



All made to the highest standards of quality. Every unit carefully inspected. Prompt deliveries. May we have your enquiries.  
Slabs from 3/- each  
Fencing Posts 10/7 each  
Line Posts 25/6 each

**LONGFORD & MIDLAND CONCRETE CO LTD**  
BEDWORTH ROAD, LONGFORD, COVENTRY · COVENTRY 88326